



SAM PuttLab

...the reference in
putt training

Science&Motion Sports

www.scienceandmotion.com

SAM PuttLab Basic Fitting Specification

Measurement

Project	Name:	Fittings	Session	Number:	001
	Description:			Name:	SAM Basic Fitting
Player	Lastname:	FITTING REPORT	File	Description:	
	Firstname:	SAMPLE		Number:	001
	Height:	74 cm		Name:	Basic Fitting
	Hand:	right		Description:	
	Handicap:	10		Date:	06.05.2012
				Putts:	7

Players Preferences

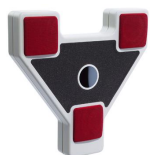
Path type:	Arc
Rotation type:	n.def.
Stroke type:	Arms
Dynamics:	n.def.
Misses direction:	Random
Misses length:	Random
Eye position:	Over
Ball position:	Center

Actual Putter

Brand:	Odyssey
Head design:	Mallet
Head balance:	Face-balanced
Offset:	Single shaft
Length:	33.5
Loft:	1.0
Lie:	66

Fitting Results

Head design:	Blade
Head balance:	face-balanced
Offset:	Single shaft
Length:	33.5
Loft:	3.5
Lie:	68
Head weight:	n.def.
Shaft weight:	n.def.



SAM PuttLab

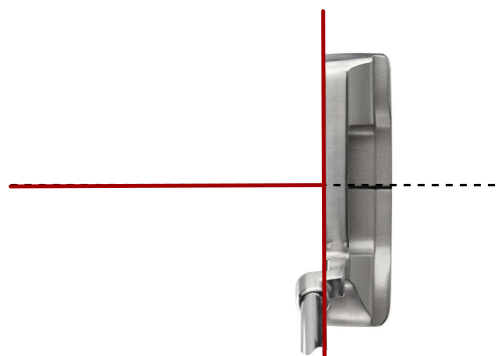
...the reference in
putt training

Science&Motion Sports

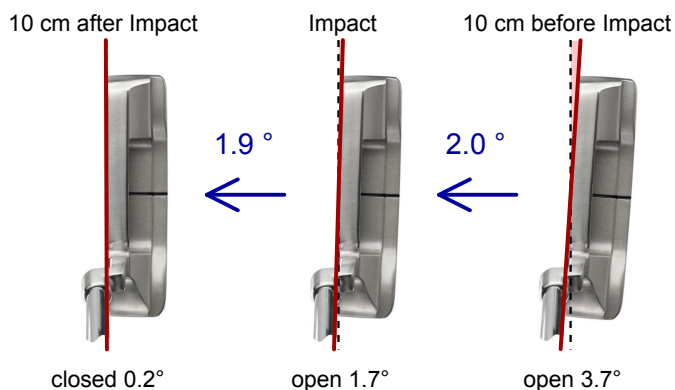
www.scienceandmotion.com

Project: Fittings
Player: FITTING REPORT, SAMPLE
File: Basic Fitting
Date: 06.05.2012

Face Aim



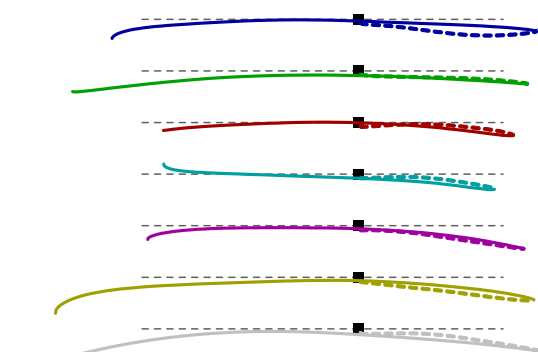
closed 0.3°



Rotation at impact: 26.4°/s

Rotation against path: 0.3° closing

Top view



Direction: 2.0° right
Path arc: 16.4°/m

Spot&Lie

Lie angle: 1.8° toe down

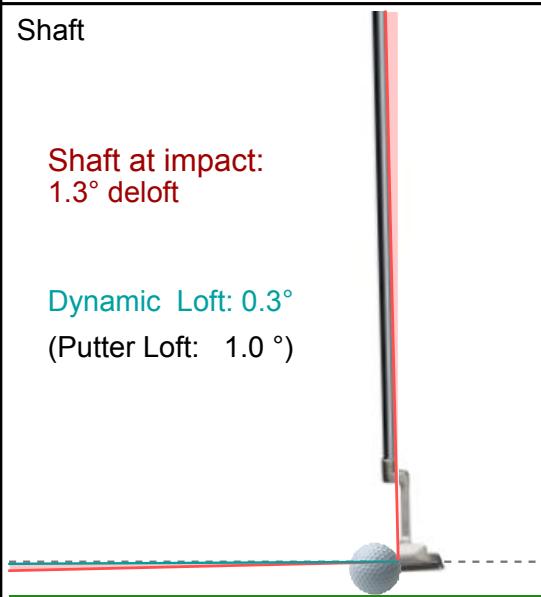


Horizontal spot: 0.2 mm toe

Shaft

Shaft at impact:
1.3° deloft

Dynamic Loft: 0.3°
(Putter Loft: 1.0°)



Launch

Predicted Spin: top
Predicted Launch: 0.1° up

Rise at impact
1.9° upward

